

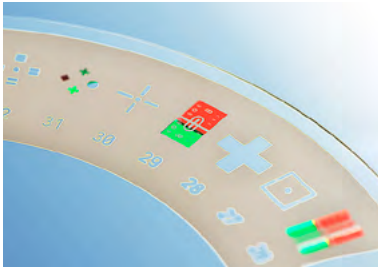
# Glass Components for Medical Applications

Conductive and optical microstructures, apertures, projection patterns and microchannels for medical devices.

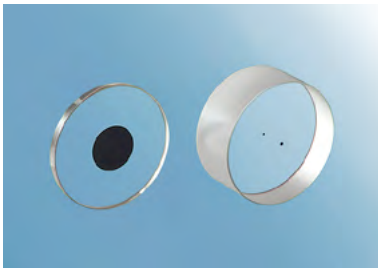




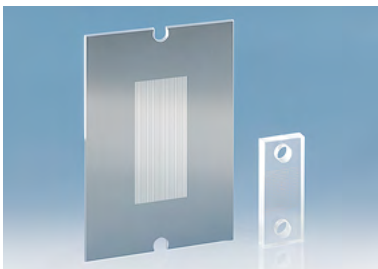
Custom made assembly (two prism with grating)



Eye testplate



Optical components for retinal assessment



Combination of uniform coating with a grating. Machined glass in combination with microwells

## Applications

- › Biosensors (electrical, optical or combined)
- › Biochips
- › Micro-fluidic components
- › Microelectrodes
- › Wave guides
- › Diagnostics
- › Ophthalmology
- › Dental care

## Benefits

- › Wide range of optical properties
- › Custom-made 3D Structures
- › Structured metallic and optical layers

## Technical Data

- › Microstructures in the sub- $\mu\text{m}$  range
- › Microchannels
- › Electrically conductive coatings (nickel-chrome, gold, aluminium and others)
- › Structured optical coatings
- › Substrate sizes from  $\varnothing$  0.8 mm to 609 mm x 812 mm

## About IMT

- › Foundry for optical, electrical and micro-fluidic structures and components
- › Fast prototyping through in-house mask manufacture
- › Staff of 100 employees
- › 1300 m<sup>2</sup> clean room



IMT Masken und Teilungen AG  
 Im Langacher 46  
 8606 Greifensee (Zurich)  
 Switzerland  
 Phone +41 44 943 19 00  
 info@imtag.ch  
 www.imtag.ch